



Rats
2025; 3(1): 27-28
Doi: 10.5281/zenodo.15767565
<https://ratsjournal.com>



Therapeutic effect of pomegranate peel extract on heme oxygen-free 1 (HO-1) and angiotensin-converting enzyme-2 (ACE-2) in the kidney tissue of mice treated with mitomycin [Rats, 2023; 1(2): 27-34]

Habibe Gündoğdu¹, Erhan Uluman², Sevda Eliş Yıldız³, Pınar Aksu Kılıç⁴, Arzu Gezer^{5*},
Ebru Karadağ Sarı⁶

¹Department of Histology and Embryology, Ataturk University School of Medicine, Erzurum, Türkiye

²Department of Biology, Faculty of Arts and Sciences, Kafkas University, Kars, Türkiye

³Department of Midwifery, Kafkas University Faculty of Health Sciences, Kars, Türkiye

⁴Department of Biology, Faculty of Arts and Sciences, Kafkas University, Kars, Türkiye

⁵Vocational School of Health Services Ataturk University, Erzurum, Türkiye

⁶Department of Histology, Kafkas University Faculty of Veterinary Medicine, Kars, Türkiye

*Corresponding: a.gezer25@hotmail.com

Received: 24.06.2025

Accepted: 28.06.2025

Published: 30.06.2025

Erratum

Unfortunately, the original version of this article¹ incorrectly placed the 50 µm magnified figures in Figures 2a and 2d on the plate. The figures are replaced with each other. The captions for Figures 2 and 3 in this figure also contained errors. These have been corrected. These edits have been corrected in the original article and are also correctly included below.

Unfortunately, the original version of this article¹ incorrectly placed the 50 µm magnified figures in Figures 2a and 2d on the plate. The figures are replaced with each other. The captions for Figures 2 and 3 in this figure also contained errors. These have been corrected. These edits have been corrected in the original article and are also correctly included below.



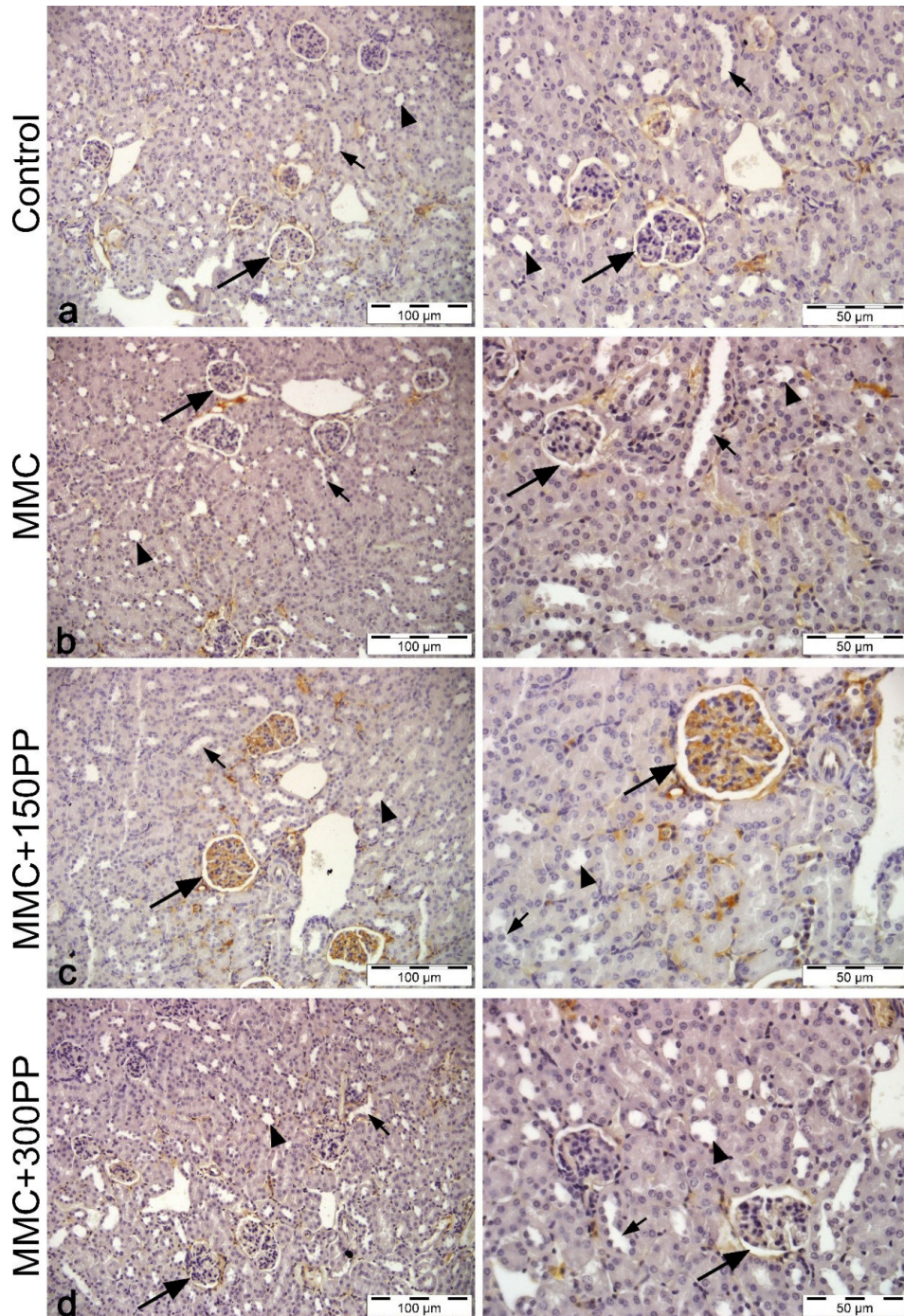


Figure 2. HO-1 immunoreactivity in mouse kidney tissue. a) Control Group, b) MMC Group, c) MMC+150PP Group, d) MMC+300PP Group. Arrow: Glomerulus, Arrow head: Distal Tubule, Small arrow: Proximal Tubule. IHC Staining.

Figure 3. ACE-2 immunoreactivity in mouse kidney tissue. a) Control Group, b) MMC Group, c) MMC+150PP Group, d) MMC+300PP Group. Arrow: Glomerulus, Arrow head: Distal Tubule, Small arrow: Proximal Tubule. IHC Staining.

Reference

1. Gündoğdu H, Uluman E, Eliş Yıldız S, Aksu Kılıç P, Gezer A, Karadağ Sarı E. Therapeutic effect of pomegranate peel extract on heme oxygen-free 1 (HO-1) and angiotensin-converting enzyme-2 (ACE-2) in the kidney tissue of mice treated with mitomycin. *Rats.* 2023; 1(2): 27-34 Doi: 10.5281/zenodo.10444360